



Facade image may depict features such as landscaping, timber decking, furniture, window treatments and lighting which are not included in the package price. Image is for illustrative purposes only.

**FIXED PRICE**

# HOME & LAND

# \$847,900

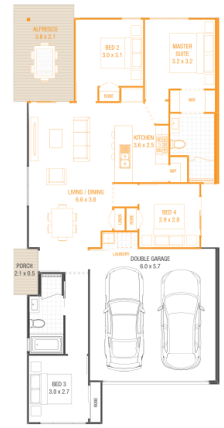
 **3**
 **2**
 **2**
 **1**

Home Fletcher | Facade Expressive  
 Land Size 260m<sup>2</sup> | Home Area 151m<sup>2</sup>

**MONTROSE - WOODLANDS**  
 Lot 1428 | Hymers Street Morayfield

**Package Highlights**

- ✓ Facade as shown + fixed price site works & price lock guarantee
- ✓ Porcelain tops to the kitchen
- ✓ 900mm gas cooker & integrated rangehood + dishwasher
- ✓ Ducted AC with ceiling fans throughout + 3.5kw solar package
- ✓ Carpet to bedrooms & tiles through out
- ✓ Blind & screens to all windows & sliding doors
- ✓ Fencing, gates & retaining
- ✓ Driveway, letterbox & clothesline



**INCLUDED OFFERS**

<b>PROMO EXTRAORDINARY AIR CON (SS)</b>	<b>PROMO EXTRAORDINARY MOVING IN PACK</b>
---	---