



Facade image may depict features such as landscaping, timber decking, furniture, window treatments and lighting which are not included in the package price. Image is for illustrative purposes only.

FIXED PRICE

HOME & LAND

\$1,121,500

 4
  2
  2
  2

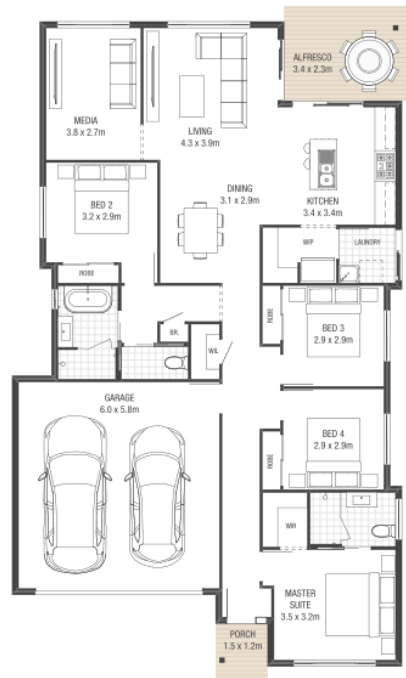
Home Denton | Facade Modish
 Land Size 578m² | Home Area 300m²

SOMERSET - CHAMBERS FLAT

Lot 23 | Kingsley Street Chambers Flat

Package Highlights

- ✓ A brand new community to make your own
- ✓ Adventure awaits in the community playground
- ✓ Building approvals and council fees included
- ✓ Ceiling fans to bedrooms for breezy cooling
- ✓ Clothesline and letterbox for convenient living
- ✓ Complete siteworks for a solid new home start
- ✓ Ducted air conditioning for year round comfort
- ✓ Durable driveway and path to your front door
- ✓ Electrical allowance to shape your own lighting
- ✓ Family friendly community with leafy parklands



INCLUDED OFFERS

PROMO
EXTRAORDINARY
AIR CON (SS)

PROMO
EXTRAORDINARY
MOVING IN PACK

AUSBUILD

SOMERSET
CHAMBERS FLAT