



Facade image may depict features such as landscaping, timber decking, furniture, window treatments and lighting which are not included in the package price. Image is for illustrative purposes only.

FIXED PRICE

HOME & LAND

\$1,112,000

 4  2.5  2  2

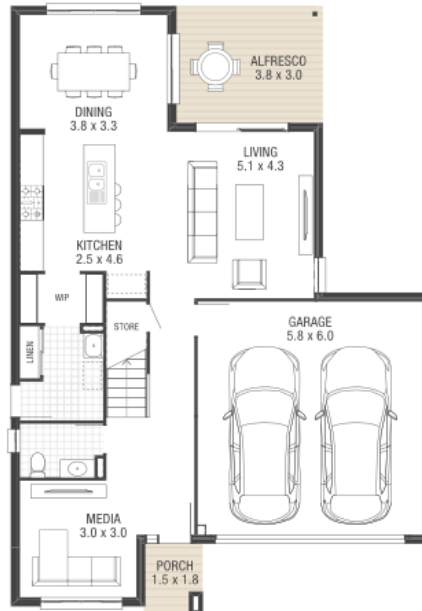
Home Elton | Facade Native
Land Size 330m² | Home Area 234m²

FORMOSA

Lot 15 | Formosa Court Murrumba Downs

Package Highlights

- ✓ A brand new community to make your own
- ✓ Building approvals and council fees included
- ✓ Ceiling fans to bedrooms for breezy cooling
- ✓ Close to well-regarded primary and high schools
- ✓ Complete siteworks for a solid new home start
- ✓ Designer basins, sleek tapware and accessories
- ✓ Direct access to main transport corridors
- ✓ Ducted air conditioning for year round comfort
- ✓ Durable driveway and path to your front door
- ✓ Electrical allowance to shape your own lighting



INCLUDED OFFERS

PROMO
EXTRAORDINARY
AIR CON (DS)

PROMO
EXTRAORDINARY
FLOORING (DS)

AUSBUILD 

Formosa

ID. PK15765